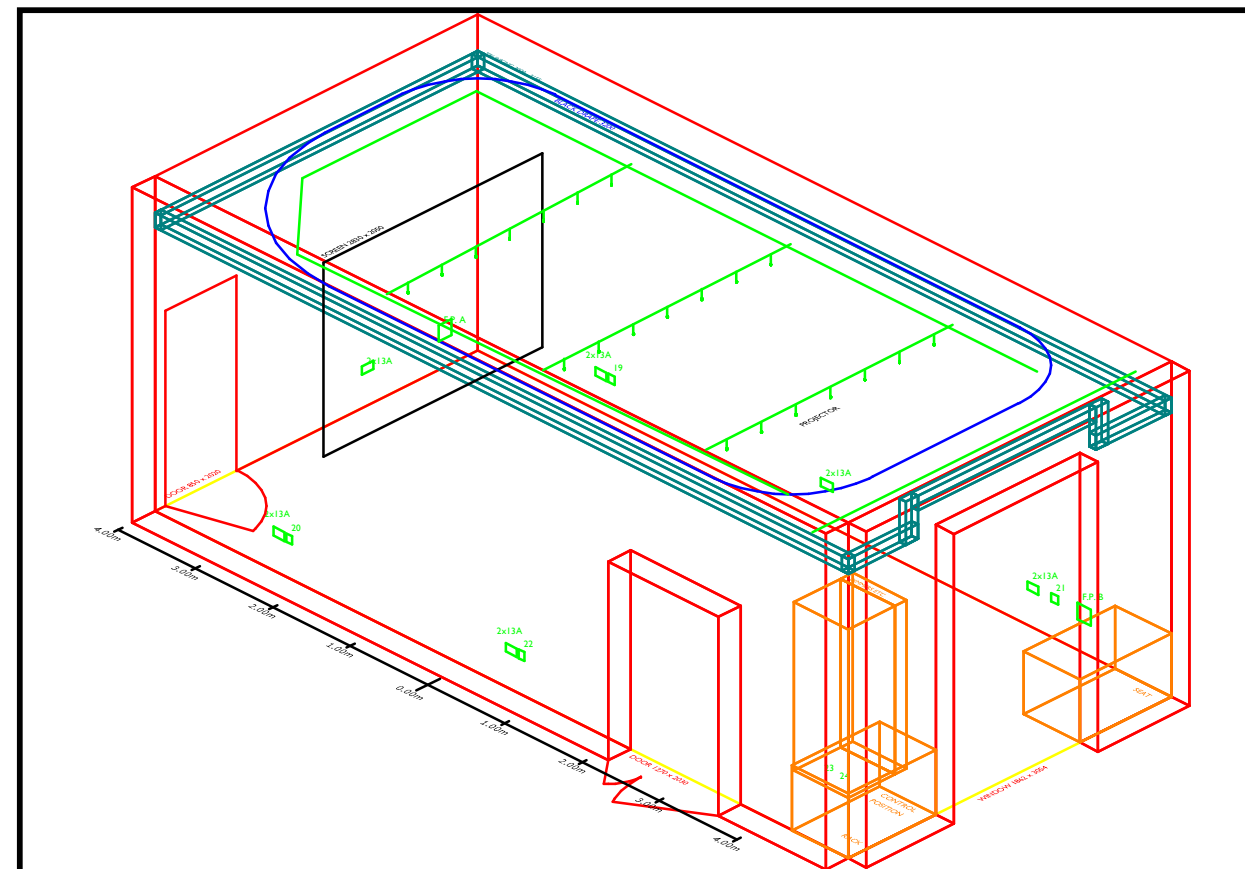
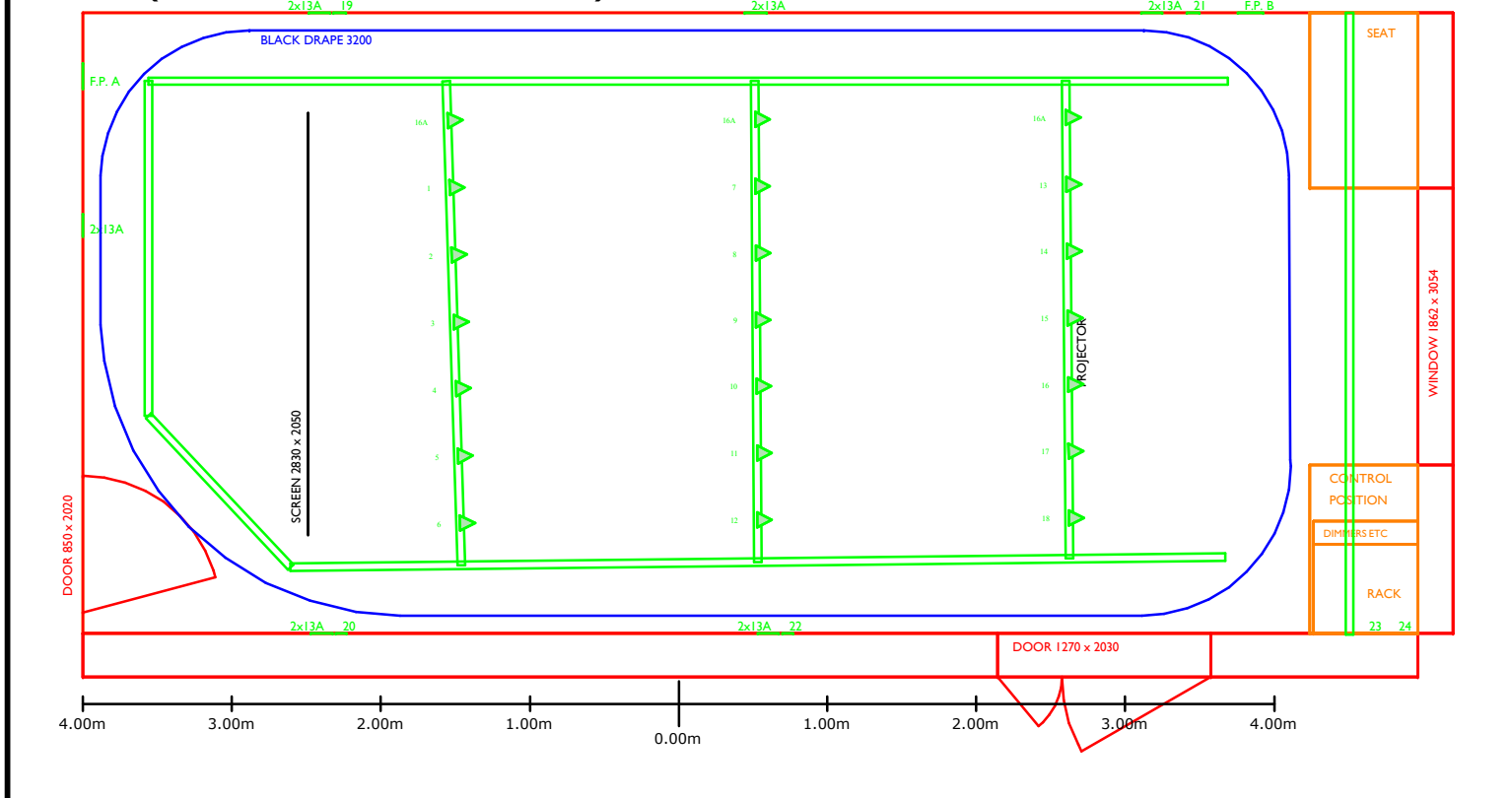
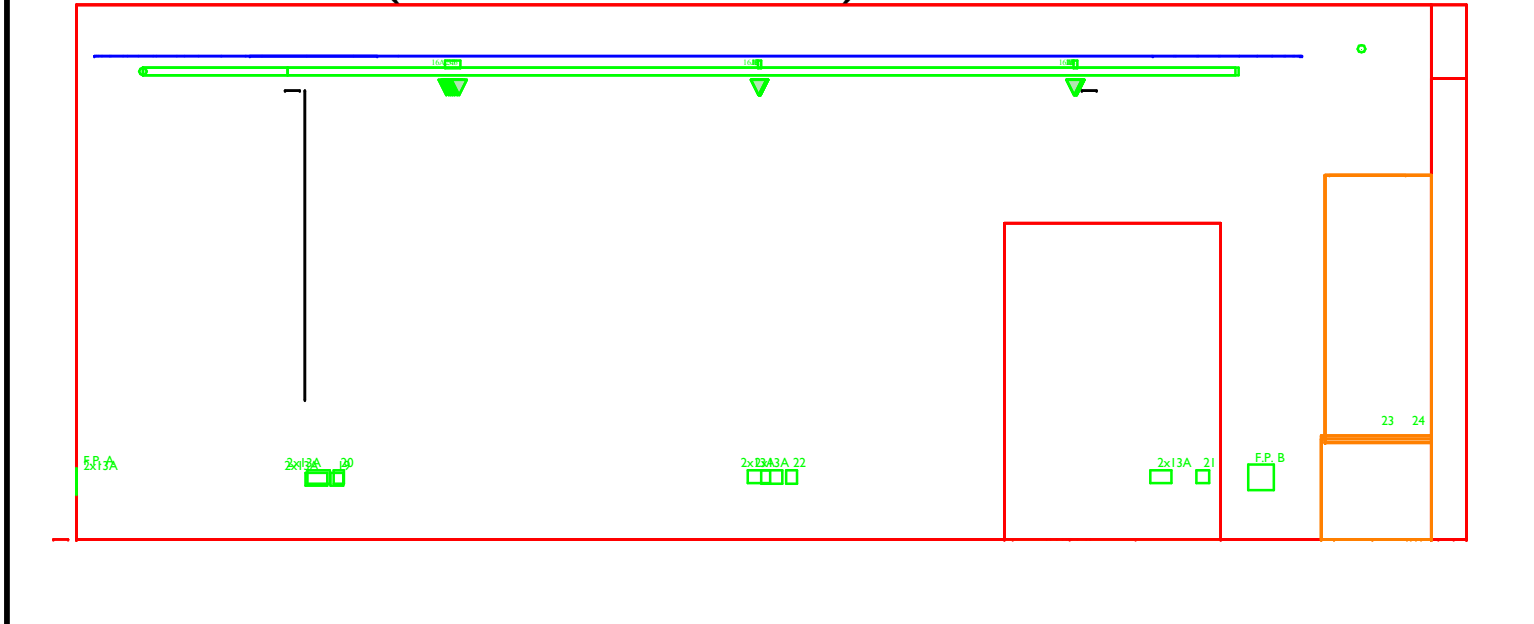


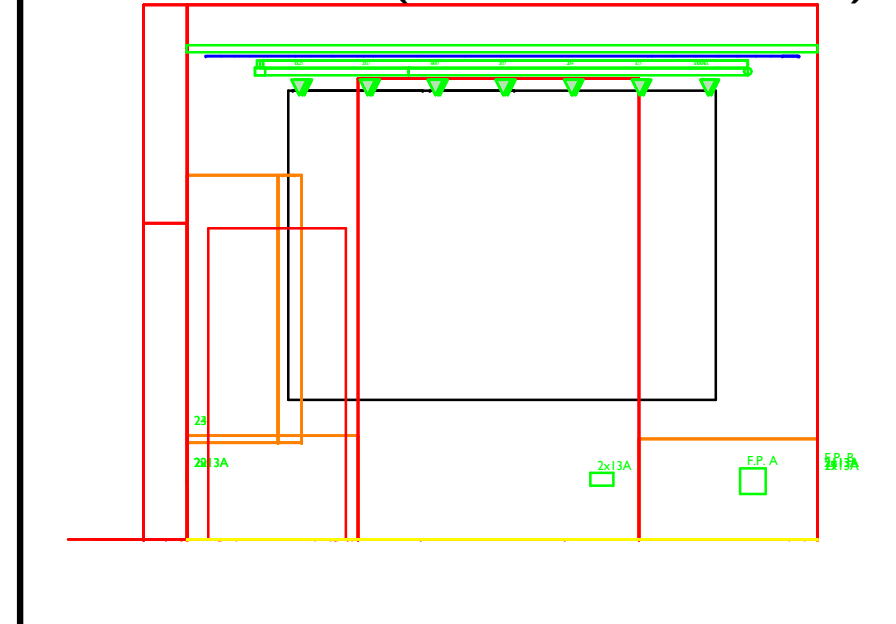
PLAN (1:50 SCALE WHEN A3)



SIDE ELEVATION (1:50 SCALE WHEN A3)



END ELEVATION (1:50 SCALE WHEN A3)



LIGHTING

24 channels of dimming hard patched 18 grid (3.1m) 4 floor level 2 in rack
 Houselights (4 x small flood) DMX channel 25; fluorescent working lights
 DMX Control by Zero88 Jester 24/48; DMX input at rack
 16A sockets individually switched in rack; all share a common 16A feed

SOUND / RACK

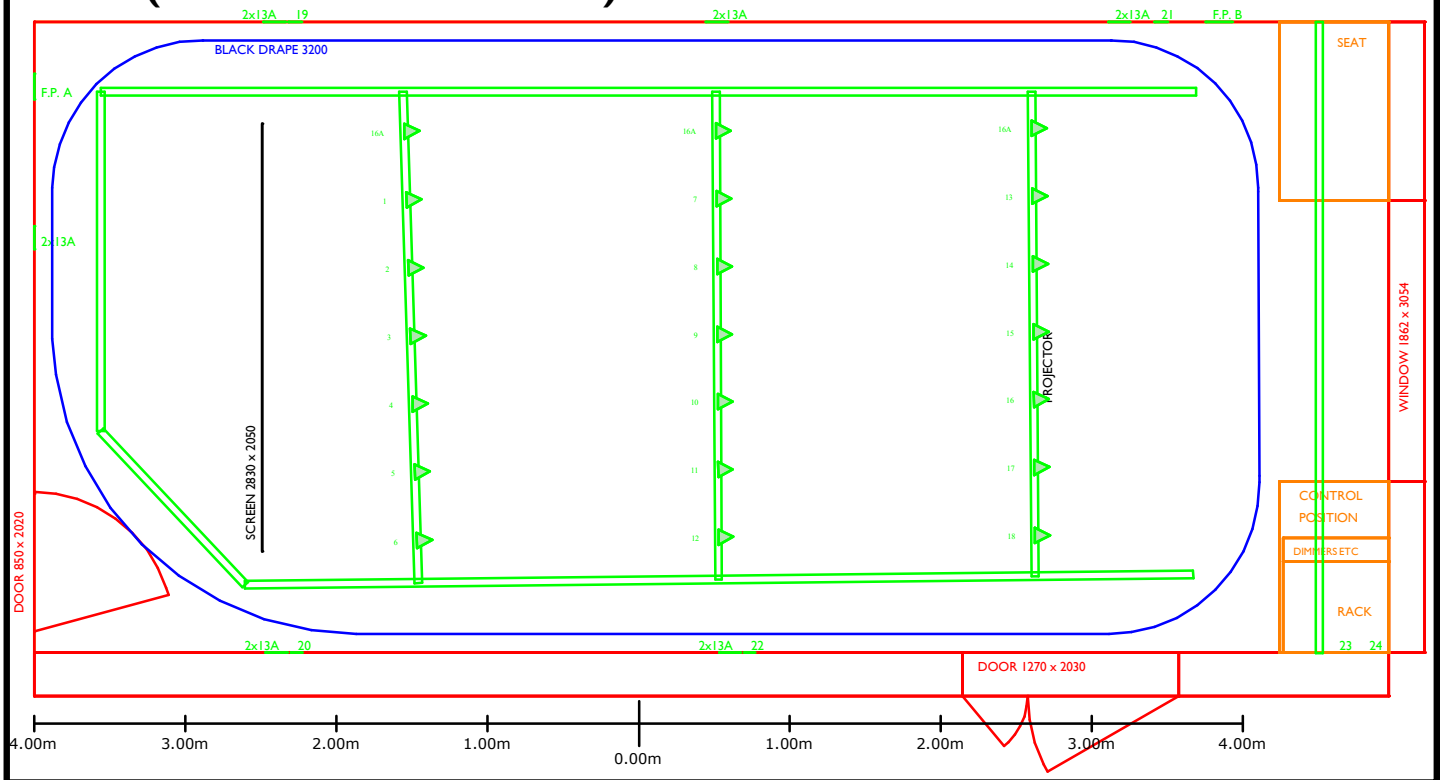
Allen & Heath GR05 mixer to 4 JBL Control 45 + JBL Sub
 CD Player and 3.5mm jack inputs
 Patch to facilities panels A,B and to main auditorium patch
 VGA connection to projector. Up down switch for screen by rack

ADC Theatre Larkum Studio first drawn Eddy Langley, Heather & Michael Darvell 1st April 2013 - <http://www.lampie.org/> for updates

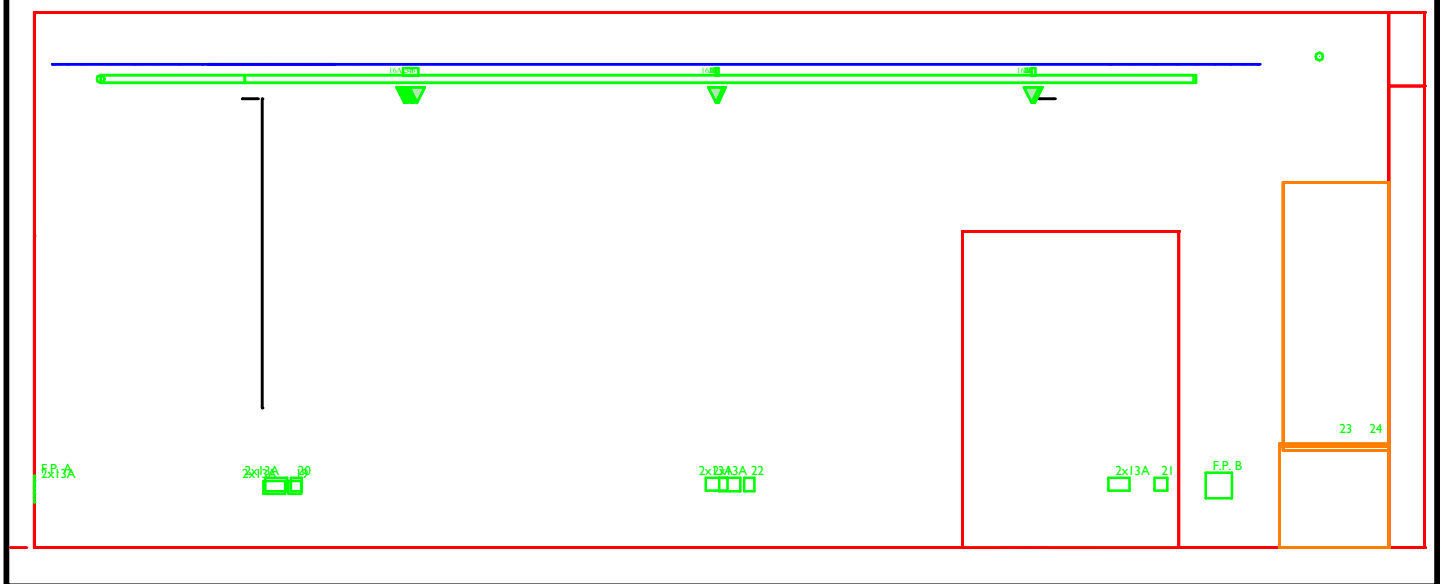
PRODUCTION:	
COMPANY:	
DATES:	
DIRECTOR:	
DESIGNER:	
LIGHTING DESIGNER:	

Drawing last updated 30/12/2017 10:09AM

PLAN (1:50 SCALE WHEN A4)



SECTION (1:50 SCALE WHEN A4)



LIGHTING

24 channels of dimming hard patched 18 grid (3.1m) 4 floor level 2 in rack
 Houselights (4 x small flood) DMX channel 25; fluorescent working lights
 DMX Control by Zero88 Jester 24/48; DMX input at rack
 16A sockets individually switched in rack; all share a common 16A feed

SOUND / RACK

Allen & Heath GR05 mixer to 4 JBL Control 45 + JBL Sub
 CD Player and 3.5mm jack inputs
 Patch to facilities panels A,B and to main auditorium patch
 VGA connection to projector. Up down switch for screen by rack

ADC Theatre Larkum Studio first drawn Eddy Langley,
 Heather & Michael Darvell 1st April 2013 -
<http://www.lampie.org/> for updates

PRODUCTION:	
COMPANY:	
DATES:	
DIRECTOR:	
DESIGNER:	
LIGHTING DESIGNER:	

Drawing last updated 30/12/2017 10:10AM